

# The International Network of Health Promoting Hospitals and Health Services: **Working towards Sustainable health care**

Dr. Oliver Groene, PhD  
CEO, International HPH Secretariat

# The International HPH Network

Definition for the WHO Health Promotion Glossary:

“Health promoting hospitals and health services (HPH) orient their governance models, structures, processes and culture to optimise health gains of patients, staff and populations served and to **support sustainable societies.**“

- 19 National/Regional Networks
- 600+ members
- 30 countries represented



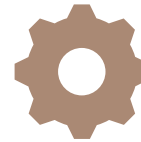
# The HPH Settings Approach

"Health is created and lived by people within the settings of their everyday life; where they learn, work, play, and love."

- The Ottawa Charter for Health Promotion



- whole- system
- holistic
- multi-disciplinary
- principles: community participation, partnership, empowerment, equity



- governance models
- structures
- processes
- culture
- communication

The complete transformation of a hospital/health service =  
**Improved health gain for patients, staff, populations served & the environment**

# Standards: Operationalizing the HPH Vision

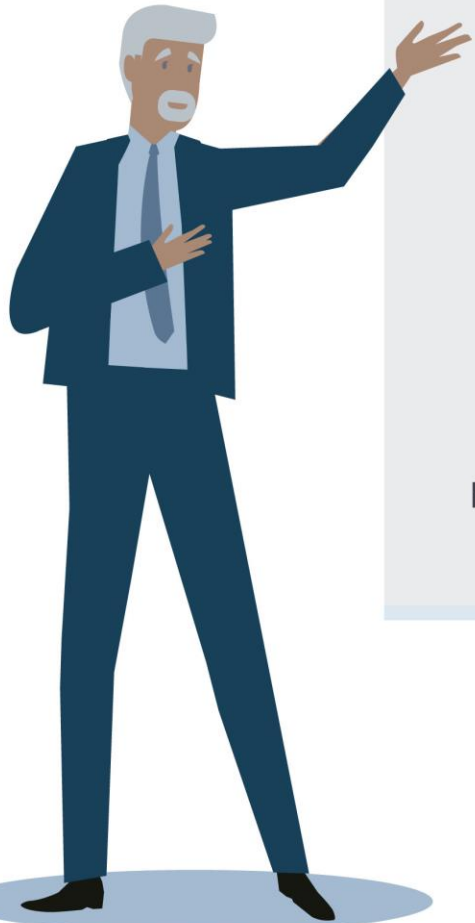
## The New Standards for Health Promoting Hospitals and Health Services

- Standard 1:** Demonstrating organizational commitment for HPH
- Standard 2:** Ensuring access to the service
- Standard 3:** Enhancing people-centered health care and user involvement
- Standard 4:** Creating a healthy workplace
- Standard 5:** Promoting health in the wider society

<https://www.hphnet.org/standards/>



International Network of  
Health Promoting Hospitals  
& Health Services



# Standard 5: Promoting health in the wider society

**Objective:** The organization accepts responsibility to promote health in the local community and for the population served.

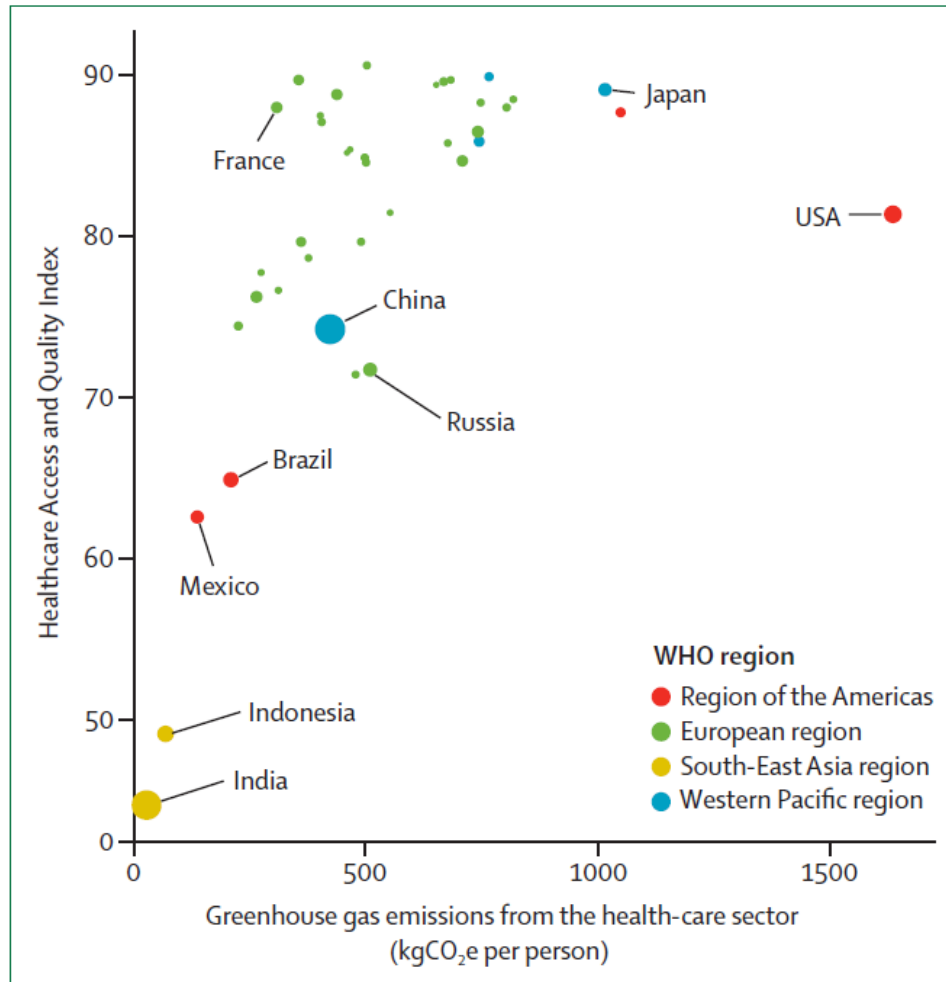
## Substandards:

- 5.1** Health needs of the population
- 5.2** Addressing community health
- 5.3** Environmental health
- 5.4** Sharing information, research & capacity

## Examples:

- 5.1.2** Our organization collaborates with public health organizations to collect information on health status, health care needs and determinants of health in the catchment area
- 5.3.2** Our organization reduces the volume and toxicity of waste produced by the health sector and implements the most environmentally sound waste management and disposal options
- 5.4.4** Our organization educates the public about determinants of health and wider societal health challenges.

# No linear increase in health care quality with higher emissions (assuming more buildings, staff, infrastructure are better)



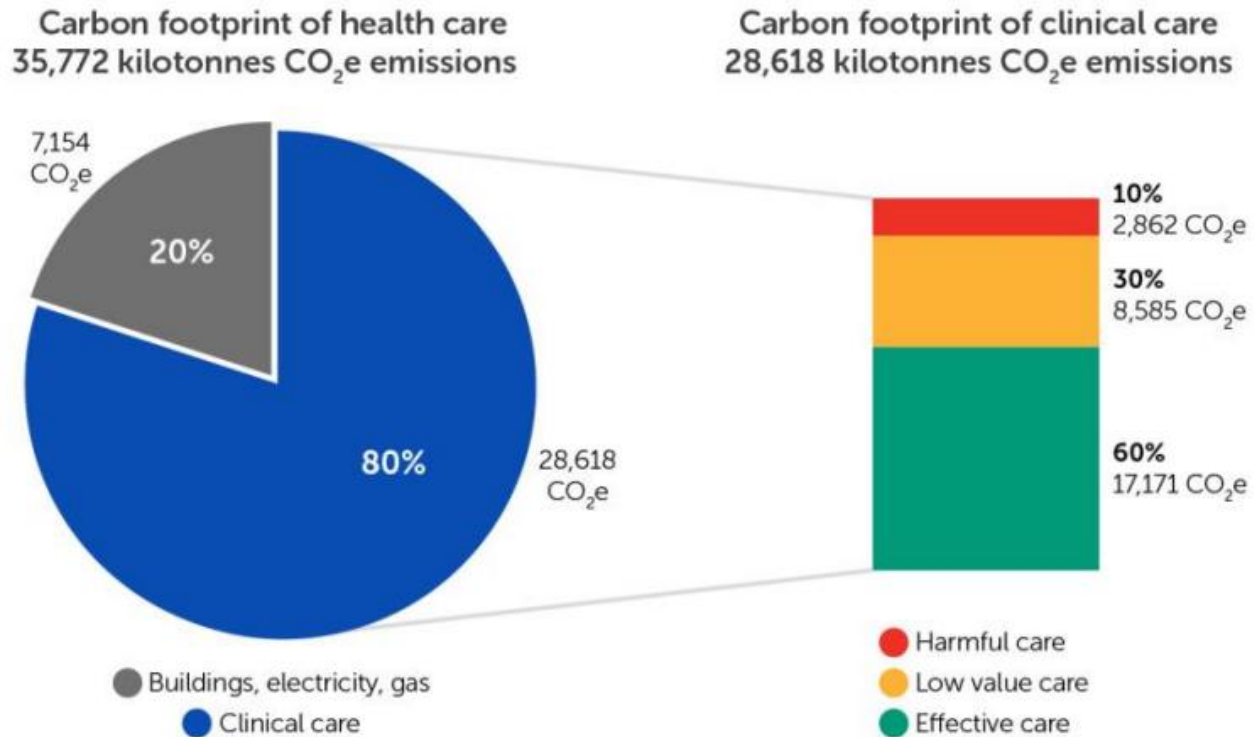
Y = healthcare access and quality index  
(composite index)

X = greenhouse gas emissions

- Strong positive correlation between CO<sub>2</sub> and HAQ ONLY up to 400 kgCO<sub>2</sub>e/person!

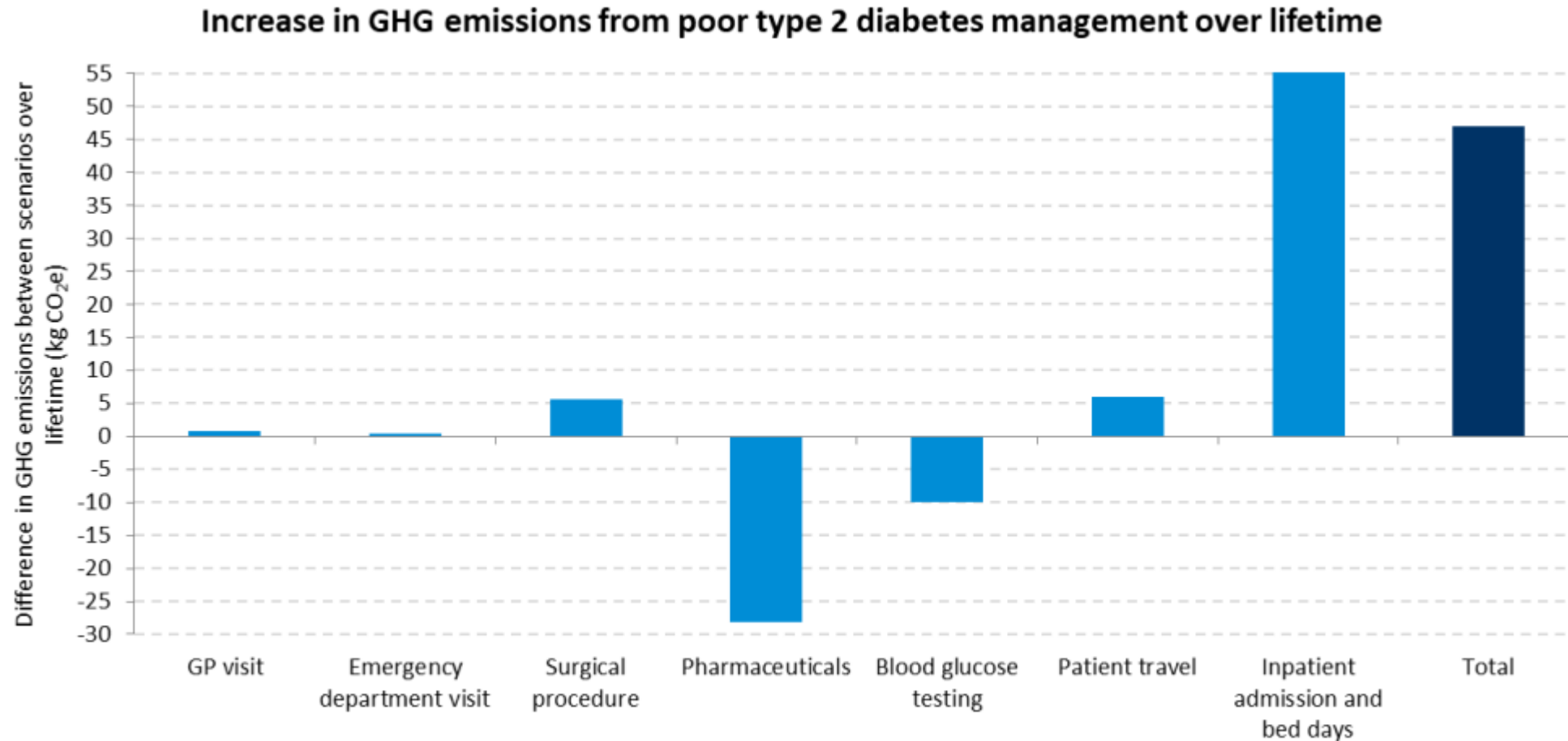
Figure 19: National per-capita greenhouse gas emissions from the health-care sector against the Healthcare Access and Quality Index for 2015  
kgCO<sub>2</sub>e=kilograms of carbon dioxide equivalent.

# A large share of carbon emissions are attributable to harmful and low value care!



Barratt AA. High value health care is low carbon health care. Medical Journal of Australia 2021

# Think pathways, not buildings!



<https://shcoalition.org/wp-content/uploads/2021/02/Type-2-Diabetes-Care-Pathway.pdf>



# HPH Standards and the environment

## Substandard 3: Environmental health.

Our organization:

- 5.3.1. advances the use of **safe chemicals, materials, and processes**.
- 5.3.2. **reduces the volume and toxicity of waste** ... and implements the most environmentally sound waste management and disposal options.
- 5.3.3. **reduces the use of fossil energy and fosters energy efficiency...**
- 5.3.4. implements **conservation, recycling, and treatment measures**.
- 5.3.5. develops transportation and service delivery strategies that **reduce the climate footprint**
- 5.3.6. fosters **healthy eating habits and accessing locally and sustainably sourced food** in the community.
- 5.3.7. incorporates **green building principles** and practices into the design, construction, and renovation of its facilities.

# eCommunity- Online Platform

- Link to relevant literature, best practice examples, Standards, videos, TF/WG websites, examples from HPH cooperating partners, etc.
- Opportunity to capture best practices in a standardized format from both HPH members and HPH partners



AIM: Collaborative learning  
through best practice



# Let's keep in contact

**The International HPH Secretariat is based  
out of the Office of OptiMedis**

Burchardstrasse 17  
20095 Hamburg  
Germany

Telephone: +49 40 22621149-0

Fax: +49 40 22621149-14

Email: [info@hphnet.org](mailto:info@hphnet.org)

