

# Task Force on Health Promoting Built Environment (HPBE)

Proposal by Elke Miedema PhD

PostDoc at Architecture & Civil Engineering at Chalmers University of Technology,  
Gotheburg, Sweden

# About the Task Force Leader



Bachelor Building and Construction Engineering

- Thesis: healing and sickning architecture.

PhD Architecture

- Thesis: Health-promotive building design  
Exploring perspectives on building design for health promotion in healthcare settings.

2012

now

2008

2020

Master Architecture

- Thesis: architecture for re-socialisation of forensic psychiatric care

PostDoc Architecture

- Design of Health-promotive (healthcare) workplaces

# Rational behind the Task Force



# Rational behind the Task Force

We know that ...

- ... we need to **re-orient towards health-promoting healthcare**

(GOEL & MCISAAC, 1999; JOHNSON, 1999; PELIKAN ET AL., 2001; WHITEHEAD, 2004A; WHO, 2004)



# Rational behind the Task Force

We know that ...

- ... we need to **re-orient towards health-promoting healthcare.**

(GOEL & MCISAAC, 1999; JOHNSON, 1999; PELIKAN ET AL., 2001; WHITEHEAD, 2004A; WHO, 2004)

- ... new healthcare approaches **change the demands for the healthcare building.**

(CARTHEY, CHOW, JUNG, & MILLS, 2011)

- ... many buildings are outdated and need **renovation or redesign**

(LÖVTRUP, 2011, CARTHEY, CHOW, JUNG, & MILLS, 2011)

# Rational behind the Task Force

So...

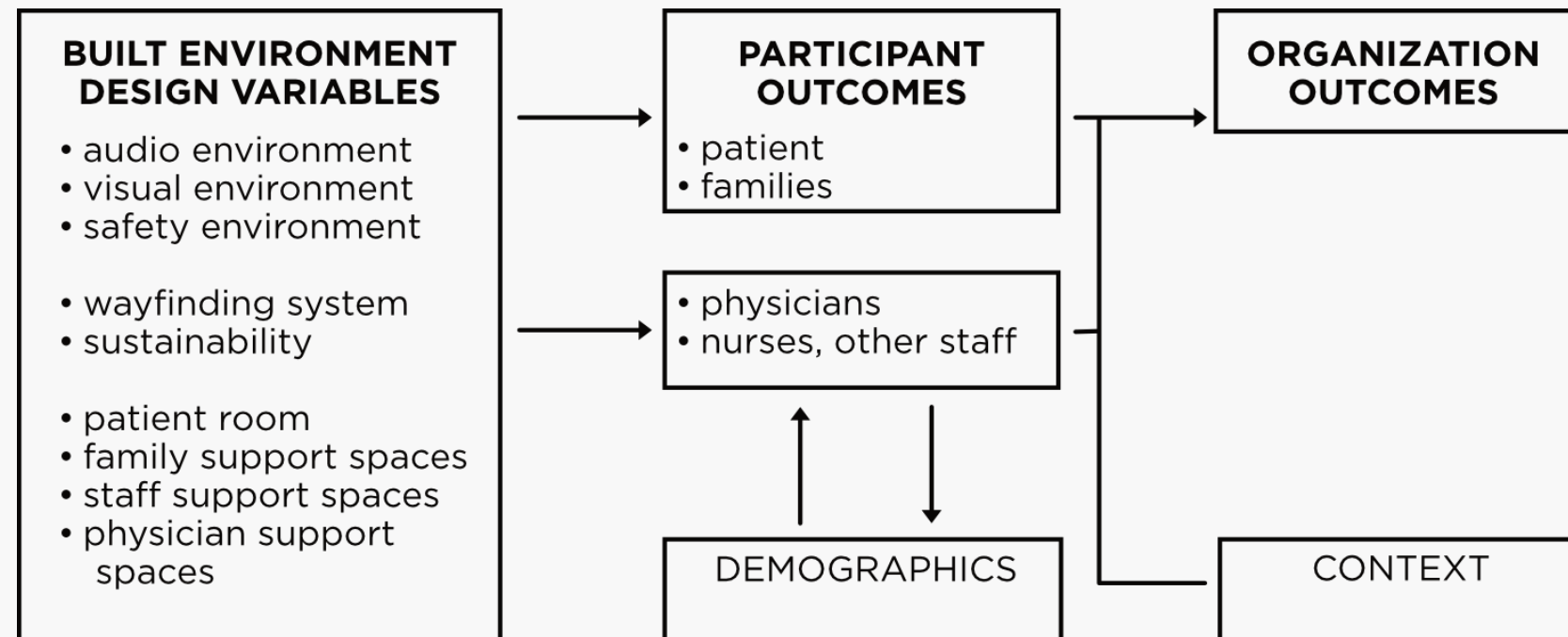
- ... we need reflect on design of built environment for HPH

(MIEDEMA, 2020),

# Rational behind the Task Force

We know that ...

- ... that **the design of healthcare buildings** can influence health of
  - building users (e.g. patient, staff, relatives),
  - the local community
  - planetary health.



(BASED UPON ULRICH 2008 & 2010)

# Rational behind the Task Force

We know that ...

- quality of healthcare buildings has been related to **healthcare quality**

(ANÅKER, HEYLIGHEN, ET AL., 2017),

- incorporation of design strategies in **the strategic documentation of a healthcare organisation** can result in improved quality of care

(ELF & MALMQVIST, 2009; ELF ET AL., 2012).



# Rational behind the Task Force

So we should...

- Use research on healthcare architecture to improve HPH
- And incorporate built environment in HPH strategies

(MIEDEMA, 2020),

# Rational behind the Task Force

## Thesis Questions

- Understandings of **health promotion** in relation to healthcare building design (design practice)

# Rational behind the Task Force

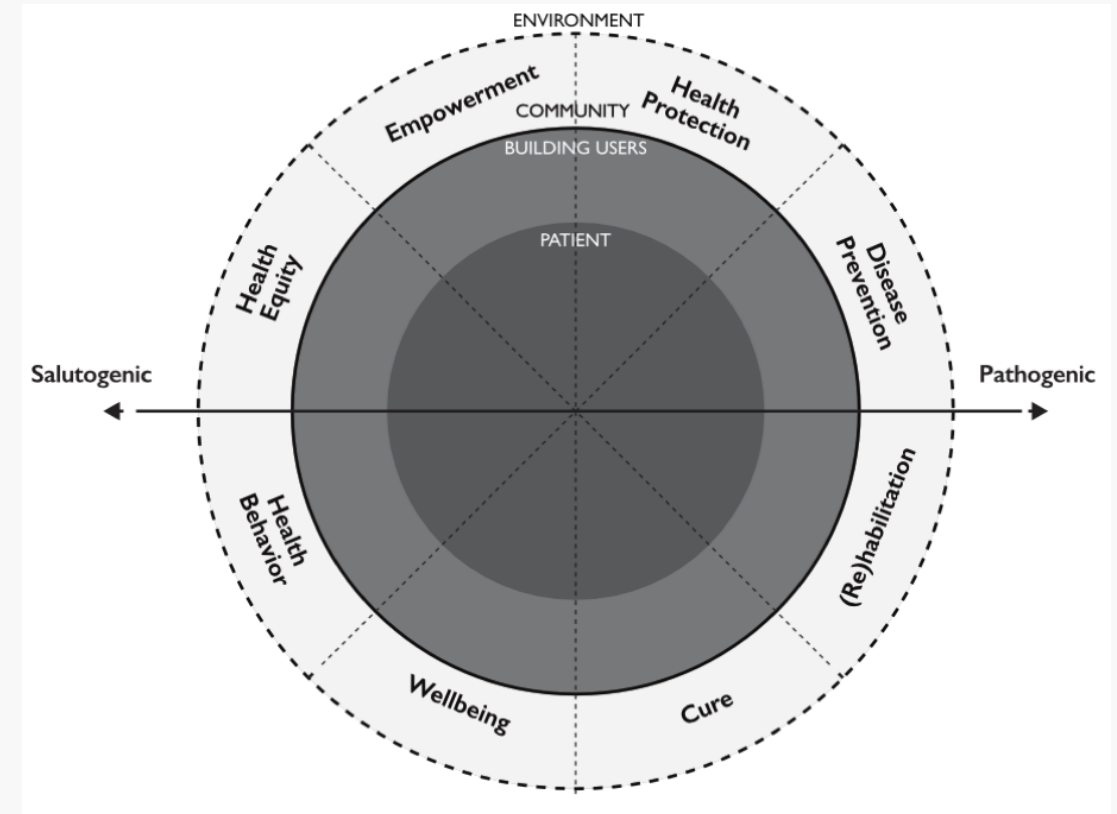
## Thesis Questions

- Understandings of **health promotion** in relation to healthcare building design (**design practice**)
  - focus on pathogenic (causes of disease) than salutogenic (origins of health)
  - either healthy behaviour OR equity OR empowerment OR sense of coherence

# Rational behind the Task Force

## Thesis Questions

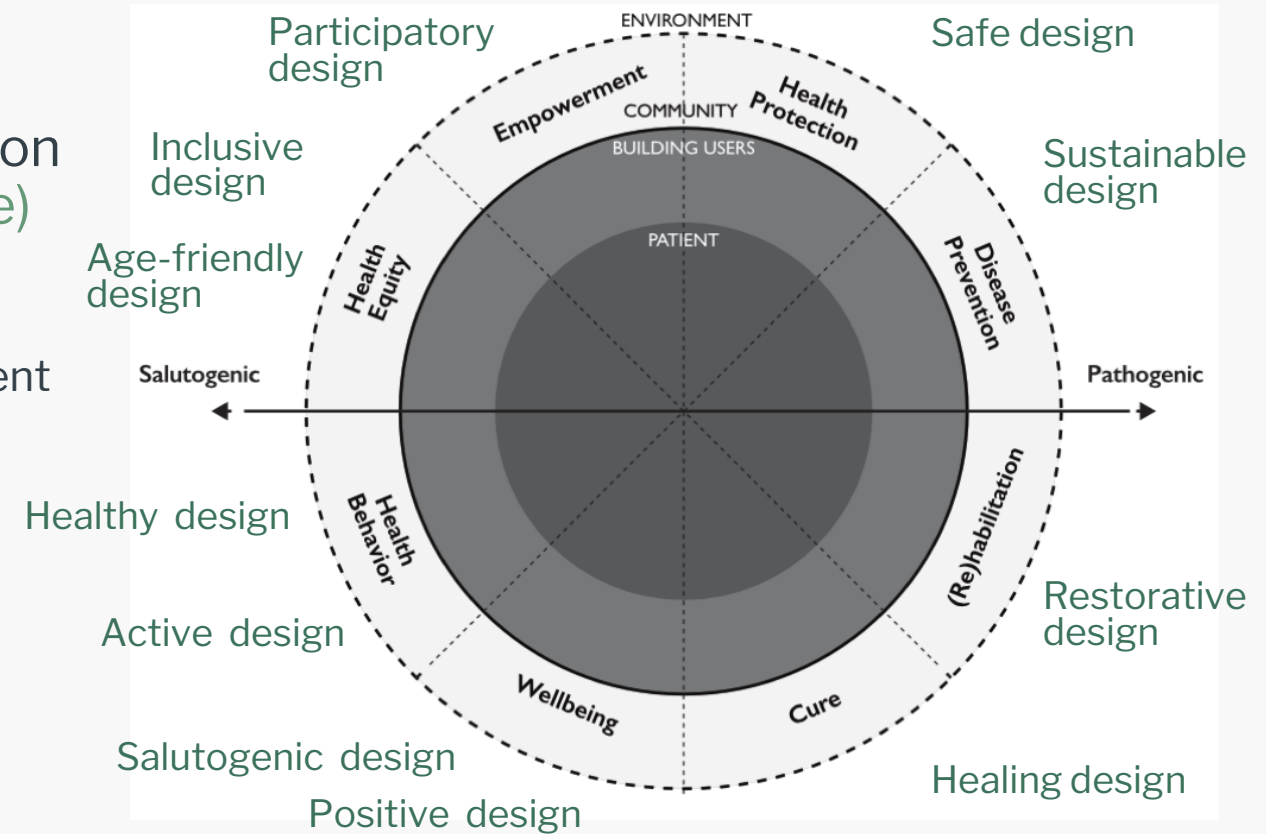
- Understandings of **health promotion** in relation to healthcare building design (**design practice**)
  - focus on pathogenic (causes of disease) than salutogenic (origins of health)
  - either healthy behaviour OR equity OR empowerment OR sense of coherence



# Rational behind the Task Force

## Thesis Questions

- Understandings of **health promotion** in relation to healthcare building design (design practice)
  - focus on pathogenic (causes of disease) than salutogenic (origins of health)
  - either healthy behaviour OR equity OR empowerment OR sense of coherence



Developed by Miedema (2020)

# Rational behind the Task Force

## Thesis Questions

- Understandings of the **built environment** in HPH (Swedish HPH networks)

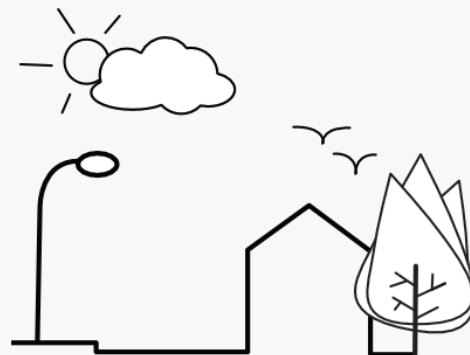
# Rational behind the Task Force

## Thesis Questions

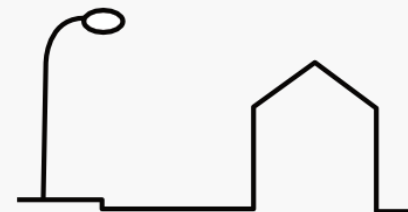
- Understanding of the **built environment** in HPH (Swedish HPH networks)
  - The limited distinction between setting, the physical environment and built environment
  - Focused more on **healing design (pathogenic)** rather than **health-promoting design (salutogenic)**



SETTING



PHYSICAL ENVIRONMENT



BUILT ENVIRONMENT



BUILDING DESIGN

## Substandard 2: Healthy setting

- 4.2.1. Our organization creates an environment where patients, families and staff feel safe, with their dignity and identity respected.
- 4.2.2. Our organization applies the common principles of Universal Design to its physical environment whenever practical, affordable, and possible.
- 4.2.3. Our organization, including waiting areas, are clean and comfortable.
- 4.2.4. Our organization is equipped with good lighting, non-slip floor surfaces, stable furniture, and clear walkways.
- 4.2.5. Our organization provides spaces and initiatives for patients, staff, and visitors to relax, exercise, and socialize.
- 4.2.6. Our organization provides healthy nutrition and prohibits unhealthy options from the premises and its immediate surrounding.
- 4.2.7. Our organization ensures that the health care environment is smoke and alcohol free and is able to minimize unnecessary noise.



# Rational behind the Task Force

## In short:

There is research that highlights the need for built environment as part of quality healthcare and HPH, however, currently

- **little focus on origins of health (salutogenics)**
- **fragmented,**
- **and hard to find.**



# Aims of Task Force

**Collect, select and share** knowledge and experiences on building design for HPH.



# Aims of Task Force

**Collect, select and share** knowledge and experiences on building design for HPH.

literature list (review), webinar, ... etc.



# Contribute to



Contribute

to **new partnerships with the design disciplines** and thereby grow the presence of the network

Adjust

**policy to include the built environment** as part of HPH development

Support

healthcare organizations capacity **to support design-decision** making for HPBE

Involve

**designers in HPH leadership** & involve design education in development of HPH.

Contribute

to organization of **knowledge exchange**, by sharing related events and organizing own events

# Planned Activities

- Establish a team

# Team (in development)

- Elke Miedema PhD (Netherlands -
- Em. Prof. Margareta Kristenson (Sweden -
- **You?!**

# Team (in development)

- Elke Miedema PhD (Netherlands -
- Em. Prof. Margareta Kristenson (Sweden -
- **You?! – affinity with built environment**
  - building and/or health (promotion) disciplines (I.E. (INTERIOR/LANDSCAPE), ARCHITECTS, DESIGNERS, FACILITY MANAGEMENT, PHYSICIANS, NURSES, MANAGEMENT, PHYSIOTHERAPISTS, NUTRITION ETC).
  - practitioners and academics
  - different countries

# Planned Activities

- Establish a team
- Set ambitions and priorities (focus group)
  - applications for funding of the work.
  - collect information (PhD work Elke & Swedish HPHN)



# Planned Activities

Other ideas from audience?



# How to contact me

Email: [elkemiedema@gmail.com](mailto:elkemiedema@gmail.com)

Website: [www.elkemiedema.com](http://www.elkemiedema.com)

LinkedIn: [www.linkedin.com/in/elkemiedema/](https://www.linkedin.com/in/elkemiedema/)

